

www.fogelusa.com



Draft Beer Dispensers

DBD-1
DBD-2E2

- Door locks furnished standard
- UL Classified to ANSI/NSF 7
- Self-closing door with safety stop at 120° and recessed handles, and Heavy-duty, chrome-plated hinges
- Polished chrome finish draft arms with faucet and connecting lines and stainless steel beer drip pan
- Strong body with thick walls, injected with CFC free polyurethane foam
- Reinforced, 16g galvanized steel base
- Exterior cabinet made of galvanized, pre-painted steel with baked black polyester paint, sturdy, stainless steel top
- Bumpers on the back of the cooler provide protection
- Galvanized steel interior offers ample storage space of beer kegs
- Hermetic seal with a vinyl magnetic gasket keyed into a thermal breaker
- Forced-air evaporator for quick temperature pull-down
- Heavy-duty R-134a condensing unit made of copper and aluminum, resistant to rust and saline environments with easy access for maintenance



Model No.	Description	Size D x L x H	Voltage	Amperes	HP	Cubic Feet
DBD-1E	1 Door/1 Dispenser	33.25" x 25.25" x 56.5"	115	4.7	1/5	10
DBD-2E2	2 Door/2 Dispensers	24" x 56.25" x 51.5"	115	8.2	1/3	15

Fogel USA

831 Easy Cayuga St • Philadelphia, PA 19124 • 1-800-344-8222 • 1-215-464-6800
Fax: 1-215-969-4890 • Email: sales@fogelusa.com • www.fogelusa.com

Draft Beer Dispensers



Technical Data

Model #	DBD-1E	DBD-2E2
Outside Dimensions		
Depth	33.25"	24"
Length	25.25"	56.25"
Height	56.5" with caster	51.5"
Door Size	22.625" x 31.5"	19.375" x 31.6.25"
Door Type	1 swing	2 swing
Inside Dimensions		
Depth	25.5"	18.625"
Length	21.25"	52.25"
Height	31.25"	31.25"
# of Kegs	1	2
# of Taps	1	2
Capacity: Cubic Foot	9.81	14.5
Specifications		
Operating Temperature	33°F-41°F	33°F-41°F
Refrigerant	R-134a	R-134a
Compressor Size HP	1/5	1/3
Voltage	115	115
Amperage	4.7	8.2
Cord and Plug	yes	yes
Shipping Dimensions		
Depth	27.25"	27.625"
Length	38"	59.5"
Height	43.5"	41.5"
Gross Weight lbs.	230	341
Cubic feet	26	40

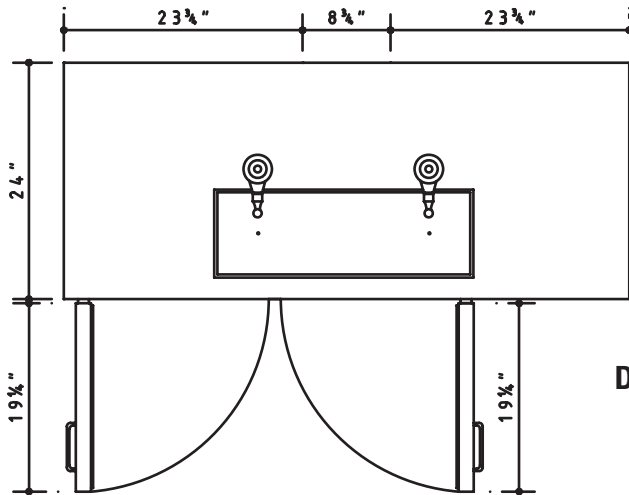
- Specification subject to change without notice.



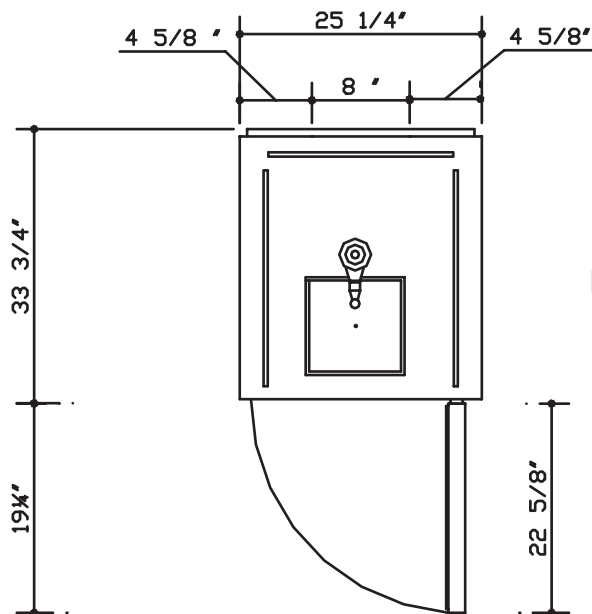
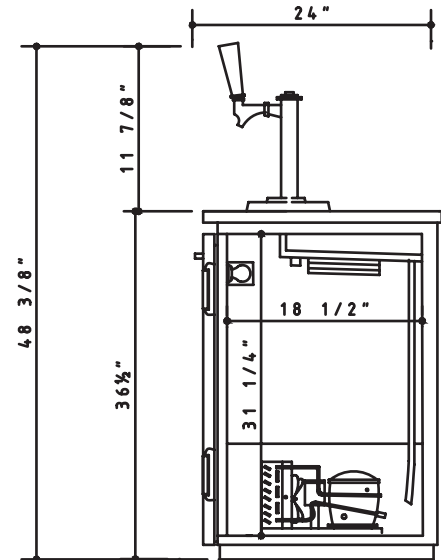


DBD-1E and DBD-2E2

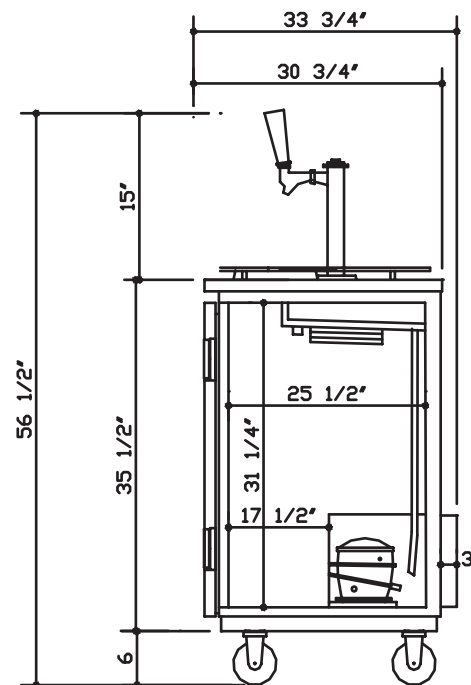
Side View - Plan View



DBD-2E2



DBD-1E



• Specification subject to change without notice.

FOGEL GROUP USA, LLC

831 E Cayuga Street, Philadelphia, PA 19124 USA • (215) 464-6800 • 1-800-344-8222
Fax (215) 969-4890 • E-Mail: sales@fogelusa.com • www.fogelusa.com

