

# Sandwich Prep Tables

- Stainless steel top, front, and sides
- Aluminum interior lining prevents corrosion
- Strong body, thick walls, injected with CFC free polyurethane foam
- Exterior cabinet made of stainless steel for added corrosion protection
- Self closing doors w/safety stop at 120°
- Heavy-duty, chrome-plated hinges, Recessed handles
- Reinforced, adjustable, heavy-duty epoxy coated shelves
- Heavy-duty casters
- Hermetic seal with vinyl magnetic gasket keyed into a thermal breaker
- 1/6 size polypropylene pans
- 12" wide NSF approved polyethylene cutting board
- UL Classified to ANSI/NSF 7
- Forced-air evaporator
- Heavy-duty R-134a condensing unit with easy access for maintenance



Model No.	Description	Size DxLxH	Voltage	Amps	HP	Cubic Feet	Est. Ship Wt
FLP-27-8	1 Door/2 Shelves/8 Pans	30.375" x 27.5" x 41.75"	115	4.5	1/5	6.6	220#
FLP-45-12	2 Door/4 Shelves/12 Pans	30.375" x 45" x 41.75"	115	7.0	1/4	11.6	311#
FLP-59-16	2 Door/4 Shelves/16 Pans	30.375" x 59" x 41.75"	115	8.5	1/3	15.7	362#

## Fogel USA

# Sandwich Prep Tables



## Technical Data

<b>Model #</b>	<b>FLP-27-8</b>	<b>FLP-45-12</b>	<b>FLP-59-16</b>
<b>Outside Dimensions</b>			
<b>Depth</b>	30.375"	30.375"	30.375"
<b>Length</b>	27.5"	45"	59"
<b>Height</b>	41.75"	41.75"	41.75"
<b>Door Size</b>	27"L x26"H	22"L x26"H	27"L x26"H
<b>Door Type</b>	1 swing	2 swing	2 swing
<b>Inside Dimensions</b>			
<b>Depth</b>	24.625"	24.625"	24.625"
<b>Length</b>	23.5"	41"	55"
<b>Height</b>	26"	26"	26"
<b>Cutting Board Size</b>	12" x 27.5"	12" x 45"	12" x 59"
<b># of Pans</b>	8	12	16
<b># of Shelves</b>	2	4	4
<b>Shelf Size</b>	16.81" x 22.56"	16.81" x 19.87"	16.81" x 26.87"
<b>Capacity: Cubic Foot</b>	6.6	11.6	15.7
<b>Specifications</b>			
<b>Operating Temperature</b>	33°F-41°F	33°F-41°F	33°F-41°F
<b>Refrigerant</b>	R-134a	R-134a	R-134a
<b>Compressor Size HP</b>	1/5	1/4	1/3
<b>Voltage</b>	115	115	115
<b>Amperage</b>	4.5	7.0	8.5
<b>Cord and Plug</b>	yes	yes	yes
<b>Shipping Dimensions</b>			
<b>Depth</b>	34"	34"	34"
<b>Length</b>	30.4"	47.8"	61"
<b>Height</b>	42"	42"	42"
<b>Gross Weight lbs.</b>	220	311	362
<b>Cubic feet</b>	25	40	51

• Specification subject to change without notice.



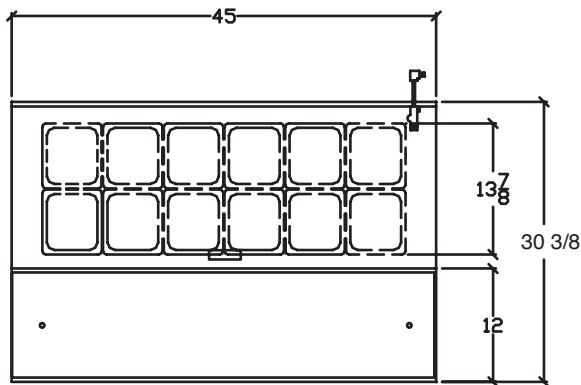


# Sandwich Prep Tables

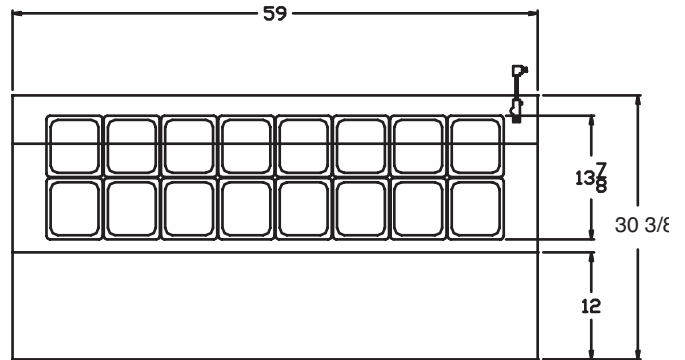
Technical Data - Side View - Plan View

## FLP-27-8, FLP-45-12, FLP-59-16

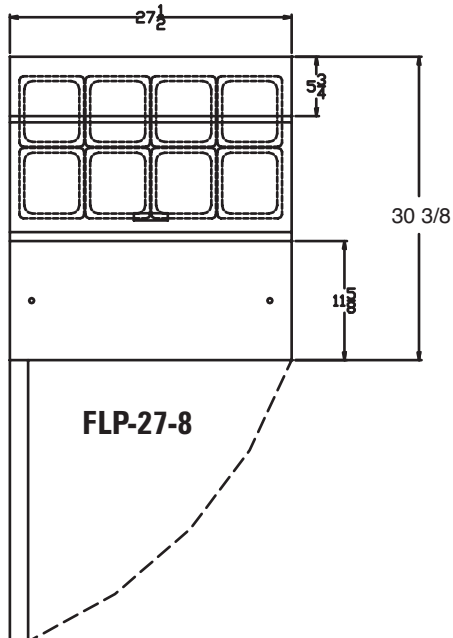
Side View - Plan View



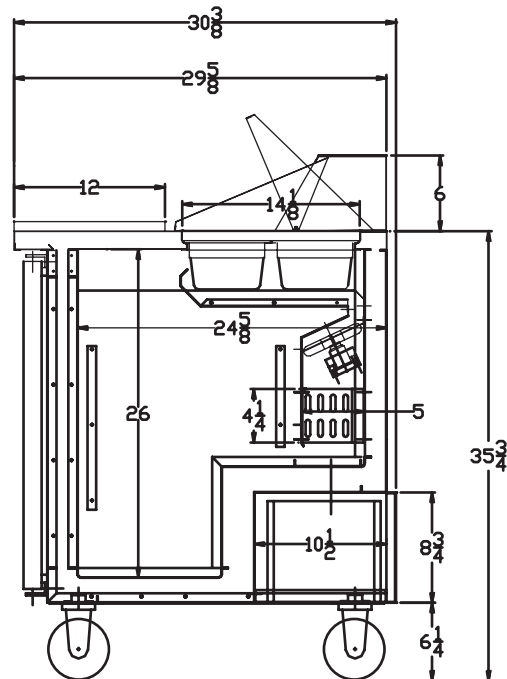
FLP-45-12



FLP-59-16



FLP-27-8



• Specification subject to change without notice.

**FOGEL GROUP USA, LLC**

831 E Cayuga Street, Philadelphia, PA 19124 USA • (215) 464-6800 • 1-800-344-8222  
 Fax (215) 969-4890 • E-Mail: sales@fogelusa.com • www.fogelusa.com

